

Figure 1. Statewide map of wildfire risk to potential structures developed for Senate Bill 762. This is the map that was released on June 30, 2022 and then later rescinded in August 2022.



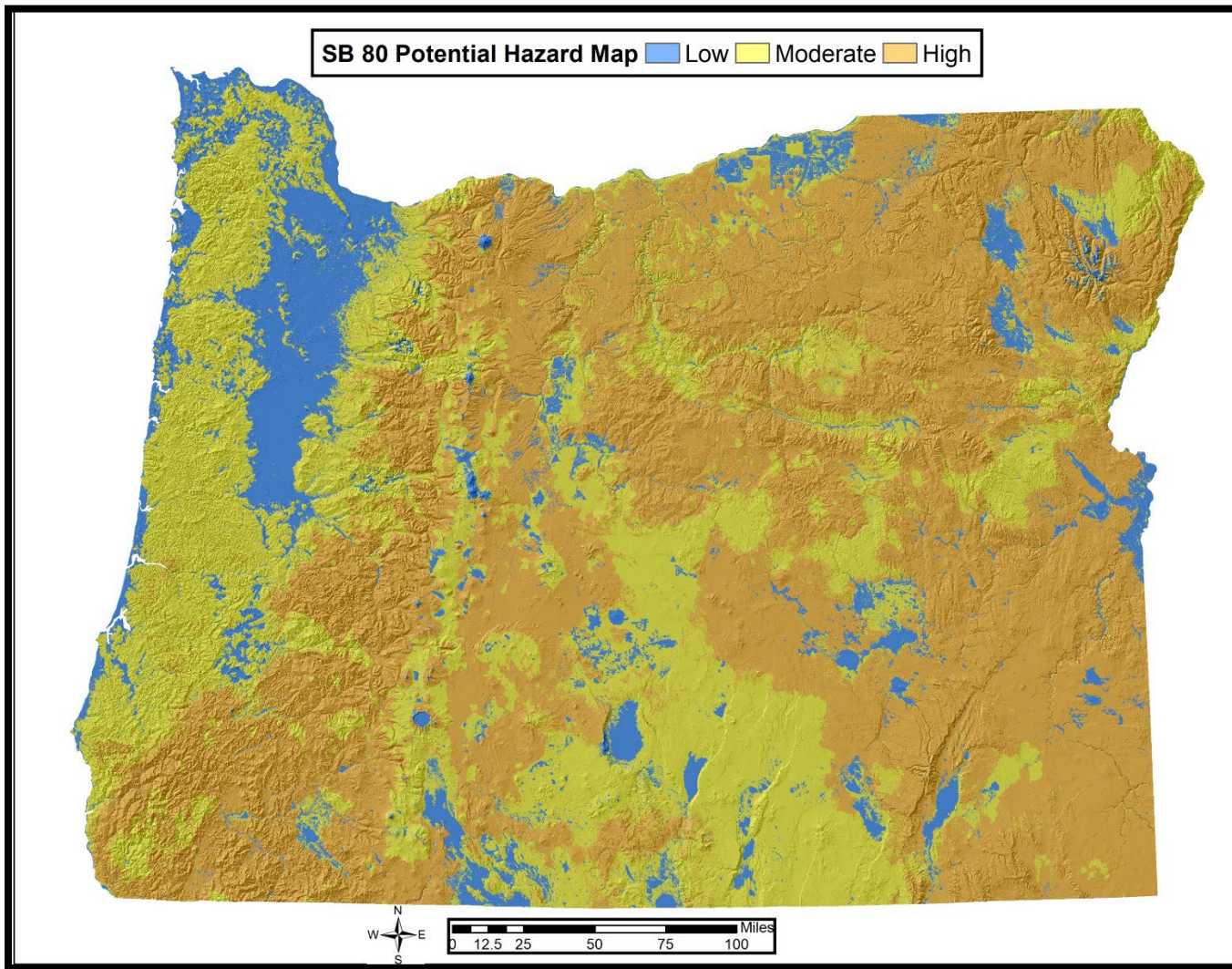


Figure 2. Potential draft map of statewide wildfire hazard based on Senate Bill 80 and possible changes in response to public feedback. As required by SB 80, this map changes the original five risk classes to three hazard classes. In addition, this map also illustrates possible changes in response to public feedback, namely what it could look like if certain irrigated croplands were to be classified as low hazard, and if we modified the fuel models in specific hay and pasturelands. This map represents a potential draft map and could be modified based on the rule-making process.